

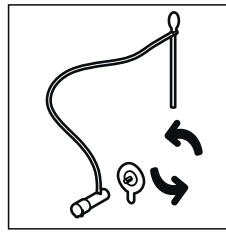
A POCKET TAP SELF-PRIMING

click valve tap
PTMVCV-NB-EN

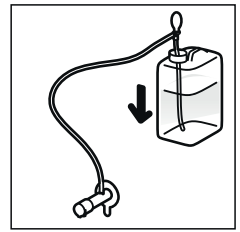
B HANDY TAP SELF-PRIMING

self-closing tap
HTMSC-GN-EN

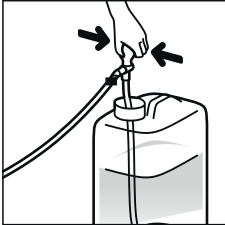
USER MANUAL



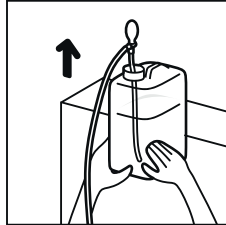
1 Screw the suction cup onto the tap.



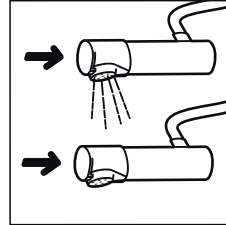
2 Insert the tube into the water tank. Place the water tank above the tap.



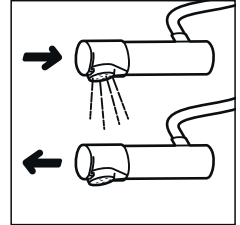
3 Squeeze the bulb several times until the water completely fills the tube.



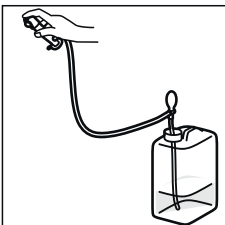
4 Place the container so that the water level is above the tap.



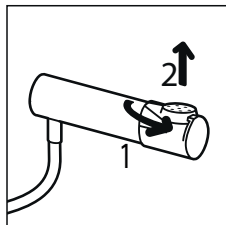
5 A
For the Pocket Tap Self-Priming (click valve tap).
To activate the water flow, press the faucet from the front and hold. Release to stop the water flow.



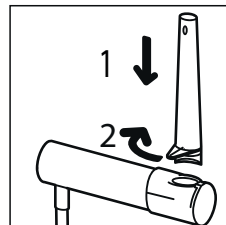
5 B
For the Handy Tap Self-Priming (self-closing tap).
To activate the water flow, press the faucet from the front and hold. Release to stop the water flow.



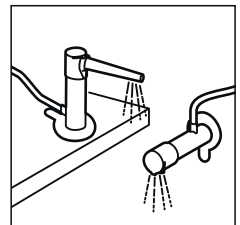
6 To empty the device, lift the tap above the water tank and press on the tap to let the water back into the water tank.



7 Depending on your needs, you can change the nozzle by turning it 90 degrees and pulling it upwards.



8 Insert another nozzle into the hole and rotate 90 degrees.



9 Application examples.