

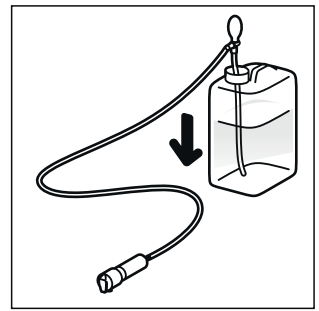
A POCKET SELF-PRIMING SHOWER

click valve shower head
PSMCV-NB-EN

B HANDY SELF-PRIMING SHOWER

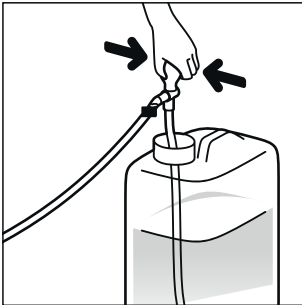
self-closing shower head
HSMSC-GN-EN

USER MANUAL



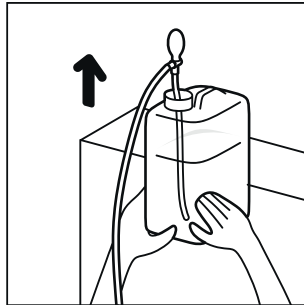
1

Insert the tube into the water container. Place the tank above the shower head.



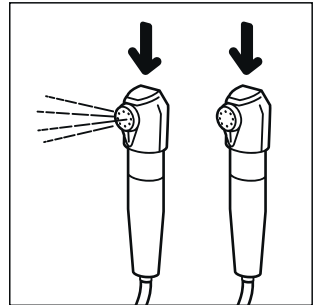
2

Squeeze the rubber bulb several times until the water fills the shower head tube.



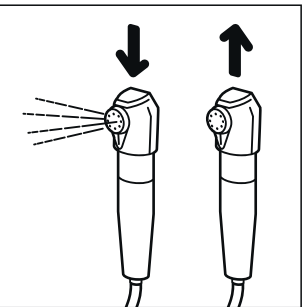
3

Place the container high, above the shower head. The bigger the relative distance the greater the pressure.



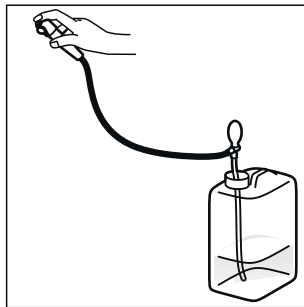
4

A
Pocket Self-priming Shower (click valve shower head)
Activate the shower by pressing the shower head. Stop the water flow by pressing the shower head again.



4

B
Handy Self-priming Shower (self-closing shower head)
Activate the shower by pressing and holding the top of the shower head. Release the shower head to stop the water flow.



5

After using the device, place the tank lower than the shower head. Pressing the shower head, will empty the water inside the hose back to the water container.